

ONE CULVER



ABOUT ONE CULVER

Located in the heart of downtown Culver City, ONE CULVER captures the energy and creativity of the entertainment, media and technology industries in Culver City, where business and culture converge.

This mixed-use property was completely re-imagined by LBA in 2017, with a Gensler design that provides high performance office space, a dramatic collaborative lobby and lively on-site retail.



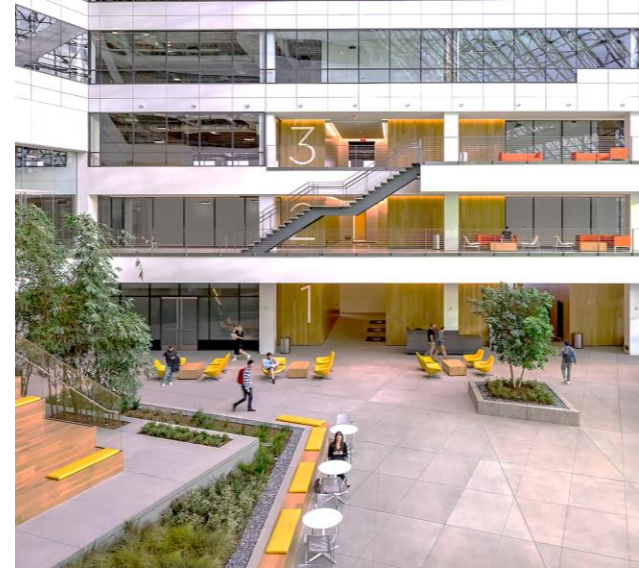


PROPERTY SUMMARY

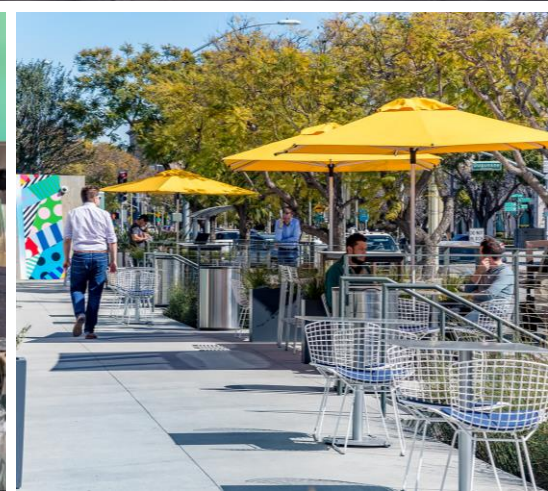
395,272 SF

96%
LEASED

4.5/1,000 USF
PARKING RATIO









LOCATION





10000 Washington Blvd
Culver City | CA

Oneculver.com

